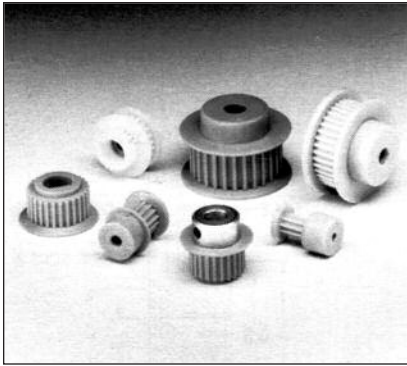


# TIMING BELT PULLEYS

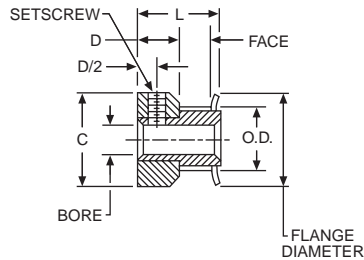
**3mm PITCH  
ALUMINUM**

**PA SERIES  
FOR 6mm WIDE BELTS**

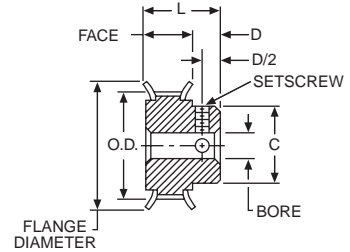


**ALUMINUM ALLOY—CLEAR ANODIZED  
COMPLETE WITH SETSCREWS**

**WITH FLANGES  
10-17 GROOVES**



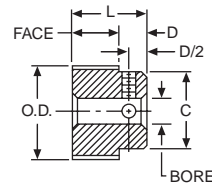
**WITH FLANGES  
18-44 GROOVES**



**STANDARD TOLERANCES**

DIMENSION		TOLERANCES
BORE	All	+ .001 - .000
O.D.	10-26 Grooves	+ .002 - .000
	28-48 Grooves	+ .003 - .000
	60-72 Grooves	+ .004 - .000

**WITHOUT FLANGES**



ALL DIMENSIONS IN INCHES  
ORDER BY CATALOG NUMBER OR ITEM CODE

No. of Grooves	Pitch Dia.	O.D.	B	Face Width	C	D	L	Flange Dia.	Setscrew*	With Flanges		Without Flanges				
										Catalog Number	Item Code	Catalog Number	Item Code			
10	.376	.346	.125	.282	.505	15/64	9/16	.505	#4-40	PA3010DF060	54448	—	—			
11	.414	.384			.530					PA3011DF060	54449	—	—			
12	.451	.421	.1875	.282	.580	15/64	9/16	.580	#6-40	PA3012DF060	54450	—	—			
13	.489	.459			.610					PA3013DF060	54451	—	—			
14	.526	.496			.635					PA3014DF060	54452	—	—			
15	.564	.534			.685					PA3015DF060	54453	—	—			
16	.602	.572			.710					PA3016DF060	54454	—	—			
17	.639	.609			.740					PA3017DF060	54455	—	—			
18	.677	.647			.250					.386	.442	19/64	11/16	.790	#8-32	PA3018DF060
19	.714	.684	.468	PA3019DF060		54457	PA3019NF060	54472								
20	.752	.722	.500	PA3020DF060		54458	PA3020NF060	54473								
22	.827	.797	.562	PA3022DF060		54459	PA3022NF060	54474								
24	.902	.872	.625	PA3024DF060		54460	PA3024NF060	54475								
25	.940	.910	.625	PA3025DF060		54461	PA3025NF060	54476								
26	.977	.947	.625	PA3026DF060		54462	PA3026NF060	54477								
28	1.053	1.023	.701	PA3028DF060		54463	PA3028NF060	54478								
30	1.128	1.098	.776	PA3030DF060		54464	PA3030NF060	54479								
32	1.203	1.173	.851	PA3032DF060		54465	PA3032NF060	54480								
34	1.278	1.248	.921	PA3034DF060		54466	PA3034NF060	54481								
36	1.353	1.323	1.000	PA3036DF060		54467	PA3036NF060	54482								
38	1.429	1.399	1.075	PA3038DF060		54468	PA3038NF060	54483								
40	1.504	1.474	1.150	PA3040DF060		54469	PA3040NF060	54484								
44	1.654	1.624	1.300	PA3044DF060	54470	PA3044NF060	54485									
48	1.805	1.775	.3125	.407	—	21/64	47/64	—	—	—	—	PA3048NF060	54486			
50	1.880	1.850			—			—	—	—	—	—	—	—	PA3050NF060	54487
56	2.105	2.075			—			—	—	—	—	—	—	—	PA3056NF060	54488
60	2.256	2.226			—			—	—	—	—	—	—	—	PA3060NF060	54489
62	2.331	2.301			—			—	—	—	—	—	—	—	PA3062NF060	54490
72	2.707	2.677			—			—	—	—	—	—	—	—	PA3072NF060	54491

\*Pulleys with 10 to 13 grooves have one setscrew. All others have two at 90°.

# TIMING BELT PULLEYS

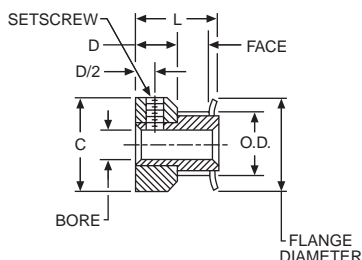
**3mm PITCH  
ALUMINUM**

**PA SERIES  
FOR 9mm WIDE BELTS**

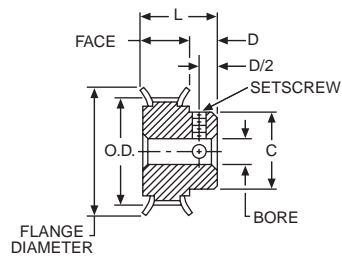


**ALUMINUM ALLOY—CLEAR ANODIZED  
COMPLETE WITH SETSCREWS**

**WITH FLANGES  
10-17 GROOVES**



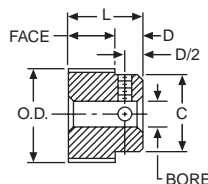
**WITH FLANGES  
18-44 GROOVES**



**STANDARD TOLERANCES**

DIMENSION		TOLERANCES
BORE	All	+0.001 -0.000
O.D.	10-26 Grooves	+0.002 -0.000
	28-48 Grooves	+0.003 -0.000
	60-72 Grooves	+0.004 -0.000

**WITHOUT FLANGES**



ALL DIMENSIONS IN INCHES  
ORDER BY CATALOG NUMBER OR ITEM CODE

No. of Grooves	Pitch Dia.	O.D.	B	Face Width	C	D	L	Flange Dia.	Setscrew*	With Flanges		Without Flanges				
										Catalog Number	Item Code	Catalog Number	Item Code			
10	.376	.346	.125	.401	.505	15/64	11/16	.505	#4-40	PA3010DF090	54492	—	—			
11	.414	.384			.530					PA3011DF090	54493	—	—			
12	.451	.421	.1875	.401	.580	15/64	11/16	.580	#6-40	PA3012DF090	54494	—	—			
13	.489	.459			.610					PA3013DF090	54495	—	—			
14	.526	.496			.635					PA3014DF090	54496	—	—			
15	.564	.534			.685					PA3015DF090	54497	—	—			
16	.602	.572			.710					PA3016DF090	54498	—	—			
17	.639	.609	.740	PA3017DF090	54499	—	—	—	—							
18	.677	.647	.250	.506	.442	19/64	13/16	.790	#8-32	PA3018DF090	54500	PA3018NF090	54515			
19	.714	.684			.468			PA3019DF090		54501	PA3019NF090	54516				
20	.752	.722			.500			PA3020DF090		54502	PA3020NF090	54517				
22	.827	.797			.562			PA3022DF090		54503	PA3022NF090	54518				
24	.902	.872			.625			PA3024DF090		54504	PA3024NF090	54519				
25	.940	.910			.625			PA3025DF090		54505	PA3025NF090	54520				
26	.977	.947			.625			PA3026DF090		54506	PA3026NF090	54521				
28	1.053	1.023			.701			PA3028DF090		54507	PA3028NF090	54522				
30	1.128	1.098			.776			PA3030DF090		54508	PA3030NF090	54523				
32	1.203	1.173			.851			PA3032DF090		54509	PA3032NF090	54524				
34	1.278	1.248	.921	PA3034DF090	54510	PA3034NF090	54525									
36	1.353	1.323	1.000	PA3036DF090	54511	PA3036NF090	54526									
38	1.429	1.399	.527	1.075	1.150	27/32	1.549	#8-32	PA3038DF090	54512	PA3038NF090	54527				
40	1.504	1.474					1.625		PA3040DF090	54513	PA3040NF090	54528				
44	1.654	1.624					1.300		PA3044DF090	54514	PA3044NF090	54529				
48	1.805	1.775					—		—	—	—	—	—	PA3048NF090	54530	
50	1.880	1.850	—	—	—	—	—	—	PA3050NF090	54531						
56	2.105	2.075	.3125	.500	1.250	3/8	7/8	—	#8-32	—	—	PA3056NF090	54532			
60	2.256	2.226						—		—	—	—	—	—	PA3060NF090	54533
62	2.331	2.301						—		—	—	—	—	—	PA3062NF090	54534
66	2.482	2.452						—		—	—	—	—	—	—	—
72	2.707	2.677						—		—	—	—	—	—	—	—

\*Pulleys with 10 to 13 grooves have one setscrew. All others have two at 90°.

# TIMING BELT PULLEYS

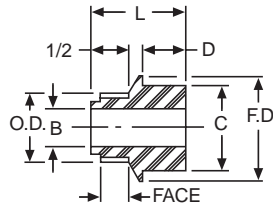
**3mm PITCH  
LEXAN**

**PL SERIES  
FOR 9mm WIDE BELTS**

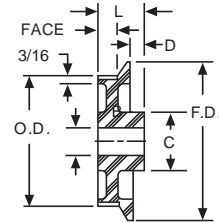


**LEXAN—FIBERGLASS REINFORCED**

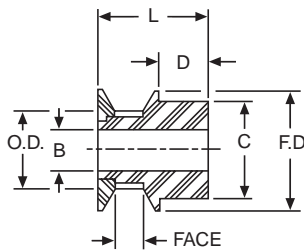
**SINGLE FLANGE  
10-28 GROOVES**



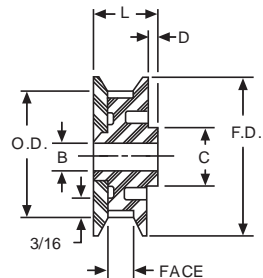
**SINGLE FLANGE  
32-120 GROOVES**



**DOUBLE FLANGE  
10-28 GROOVES**



**DOUBLE FLANGE  
32-80 GROOVES**



**STANDARD TOLERANCES**

DIMENSION	TOLERANCES
BORE	All +.001 -.000

ALL DIMENSIONS IN INCHES  
ORDER BY CATALOG NUMBER OR ITEM CODE

No. of Grooves	Pitch Dia.	O.D.	B	Face Width	C	D	L	Flange Dia.	Single Flange		Double Flange		
									Catalog Number	Item Code	Catalog Number	Item Code	
10	.376	.346	3/16	7/16	5/8	1/4	3/4*	.63	PL3010SF090	54536	PL3010DF090	54560	
11	.414	.384							PL3011SF090	54537	PL3011DF090	54561	
12	.451	.421							PL3012SF090	54538	PL3012DF090	54562	
13	.489	.459							PL3013SF090	54539	PL3013DF090	54563	
14	.526	.496							PL3014SF090	54540	PL3014DF090	54564	
15	.564	.534			11/16	7/8	1/4	13/16	1.06	PL3015SF090	54541	PL3015DF090	54565
16	.602	.572								PL3016SF090	54542	PL3016DF090	54566
17	.639	.609								PL3017SF090	54543	PL3017DF090	54567
18	.677	.647								PL3018SF090	54544	PL3018DF090	54568
19	.714	.684								PL3019SF090	54545	PL3019DF090	54569
20	.752	.722	1/4	7/8	3/4	7/8	13/16**	2.46	PL3020SF090	54546	PL3020DF090	54570	
22	.827	.797							PL3022SF090	54547	PL3022DF090	54571	
25	.940	.910							PL3025SF090	54548	PL3025DF090	54572	
28	1.053	1.023							PL3028SF090	54549	PL3028DF090	54573	
32	1.203	1.173							PL3032SF090	54550	PL3032DF090	54574	
36	1.353	1.323			5/16	1	7/8	13/16	3.29	PL3036SF090	54551	PL3036DF090	54575
40	1.504	1.474								PL3040SF090	54552	PL3040DF090	54576
48	1.805	1.775								PL3048SF090	54553	PL3048DF090	54577
60	2.256	2.226								PL3060SF090	54554	PL3060DF090	54578
72	2.707	2.677								PL3072SF090	54555	PL3072DF090	54579
80	3.008	2.978	3/8	1/2	1	3/8	7/8	—	PL3080SF090	54556	PL3080DF090	54580	
84	3.158	3.128							PL3084SF090	54557	—	—	
96	3.609	3.579							PL3096SF090	54558	—	—	
120	4.511	4.481	PL3120NF090†	54559	—	—							

\*13/16" for Double Flanges.

\*\*7/8" for Double Flanges.

†No Flange.

# TIMING BELT PULLEYS

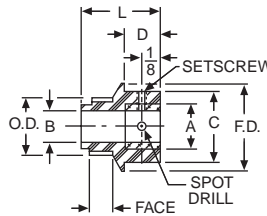
**3mm PITCH  
LEXAN**

**PLB SERIES  
FOR 9mm WIDE BELTS**

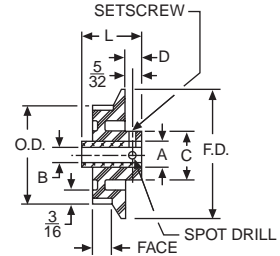


**LEXAN—FIBERGLASS REINFORCED  
KNURLED ALUMINUM INSERTS  
COMPLETE WITH SETSCREWS**

**SINGLE FLANGE  
10-16 GROOVES**



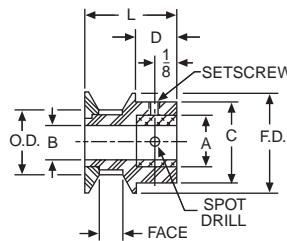
**SINGLE FLANGE  
17-28 GROOVES**



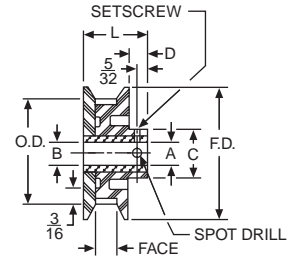
**STANDARD TOLERANCES**

DIMENSION		TOLERANCES
BORE	All	+ .001 - .000

**DOUBLE FLANGE  
10-16 GROOVES**



**DOUBLE FLANGE  
17-28 GROOVES**



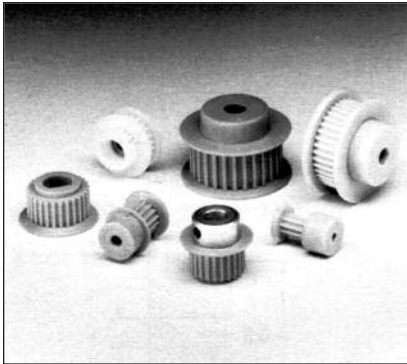
ALL DIMENSIONS IN INCHES  
ORDER BY CATALOG NUMBER OR ITEM CODE

No. of Grooves	Pitch Dia.	O.D.	B	Face Width	C	D	Insert Dia.	L	Flange Dia.	Setscrew	Single Flange		Double Flange	
											Catalog Number	Item Code	Catalog Number	Item Code
10	.376	.346	3/16	7/16	5/8	1/4	3/8	3/4	.63	#6-32	PLB3010SF090	54581	PLB3010DF090	54633
11	.414	.384									PLB3011SF090	54582	PLB3011DF090	54634
12	.451	.421									PLB3012SF090	54583	PLB3012DF090	54635
13	.489	.459									PLB3013SF090	54584	PLB3013DF090	54636
14	.526	.496									PLB3014SF090	54585	PLB3014DF090	54637
15	.564	.534									PLB3015SF090	54586	PLB3015DF090	54638
16	.602	.572									PLB3016SF090	54587	PLB3016DF090	54639
17	.639	.609	3/16 1/4	7/16	11/16	1/4	3/8	13/16	.87	#6-32	PLB3017SF090-3/16	54588	PLB3017DF090-3/16	54640
			PLB3017SF090-1/4								54589	PLB3017DF090-1/4	54641	
18	.677	.647	3/16 1/4								PLB3018SF090-3/16	54590	PLB3018DF090-3/16	54642
			PLB3018SF090-1/4								54591	PLB3018DF090-1/4	54643	
19	.714	.684	3/16 1/4								PLB3019SF090-3/16	54592	PLB3019DF090-3/16	54644
			PLB3019SF090-1/4								54593	PLB3019DF090-1/4	54645	
20	.752	.722	3/16 1/4								PLB3020SF090-3/16	54594	PLB3020DF090-3/16	54646
			PLB3020SF090-1/4								54595	PLB3020DF090-1/4	54647	
22	.827	.797	3/16 1/4								PLB3022SF090-3/16	54596	PLB3022DF090-3/16	54648
			PLB3022SF090-1/4								54597	PLB3022DF090-1/4	54649	
25	.940	.910	1/4 5/16 3/8	3/4	1/2	1/2	1/2	1.19	#8-32	PLB3025SF090-1/4	54598	PLB3025DF090-1/4	54650	
			PLB3025SF090-5/16							54599	PLB3025DF090-5/16	54651		
			PLB3025SF090-3/8							54600	PLB3025DF090-3/8	54652		
28	1.053	1.023	1/4 5/16 3/8							PLB3028SF090-1/4	54601	PLB3028DF090-1/4	54653	
			PLB3028SF090-5/16	54602	PLB3028DF090-5/16	54654								
			PLB3028SF090-3/8	54603	PLB3028DF090-3/8	54655								

# TIMING BELT PULLEYS

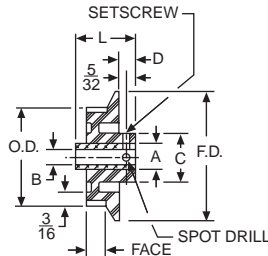
**3mm PITCH  
LEXAN**

**PLB SERIES  
FOR 9mm WIDE BELTS**

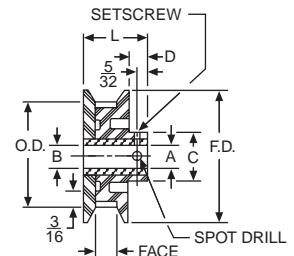


**LEXAN—FIBERGLASS REINFORCED  
KNURLED ALUMINUM INSERTS  
COMPLETE WITH SETSCREWS**

**SINGLE FLANGE**



**DOUBLE FLANGE**



**STANDARD TOLERANCES**

DIMENSION	TOLERANCES
BORE	All +.001 - .000

ALL DIMENSIONS IN INCHES  
ORDER BY CATALOG NUMBER OR ITEM CODE

No. of Grooves	Pitch Dia.	O.D.	B	Face Width	C	D	Insert Dia.	L	Flange Dia.	Setscrew	Single Flange		Double Flange	
											Catalog Number	Item Code	Catalog Number	Item Code
32	1.203	1.173	1/4	7/16	3/4	1/4	1/2	13/16	1.44	#8-32	PLB3032SF090-1/4	54604	PLB3032DF090-1/4	54656
			5/16								PLB3032SF090-5/16	54605	PLB3032DF090-5/16	54657
			3/8								PLB3032SF090-3/8	54606	PLB3032DF090-3/8	54658
36	1.353	1.323	1/4	7/16	7/8	1/4	1/2	13/16	1.57	#8-32	PLB3036SF090-1/4	54607	PLB3036DF090-1/4	54659
			5/16								PLB3036SF090-5/16	54608	PLB3036DF090-5/16	54660
			3/8								PLB3036SF090-3/8	54609	PLB3036DF090-3/8	54661
40	1.504	1.474	1/4	7/16	7/8	1/4	1/2	13/16	1.76	#8-32	PLB3040SF090-1/4	54610	PLB3040DF090-1/4	54662
			5/16								PLB3040SF090-5/16	54611	PLB3040DF090-5/16	54663
			3/8								PLB3040SF090-3/8	54612	PLB3040DF090-3/8	54664
48	1.805	1.775	1/4	7/16	7/8	1/4	1/2	13/16	2.02	#8-32	PLB3048SF090-1/4	54613	PLB3048DF090-1/4	54665
			5/16								PLB3048SF090-5/16	54614	PLB3048DF090-5/16	54666
			3/8								PLB3048SF090-3/8	54615	PLB3048DF090-3/8	54667
60	2.256	2.226	5/16	7/16	7/8	1/4	1/2	13/16	2.46	#10-32	PLB3060SF090-5/16	54616	PLB3060DF090-5/16	54668
			3/8								PLB3060SF090-3/8	54617	PLB3060DF090-3/8	54669
			1/2								PLB3060SF090-1/2	54618	PLB3060DF090-1/2	54670
72	2.707	2.677	5/16	7/16	7/8	1/4	1/2	13/16	2.92	#10-32	PLB3072SF090-5/16	54619	PLB3072DF090-5/16	54671
			3/8								PLB3072SF090-3/8	54620	PLB3072DF090-3/8	54672
			1/2								PLB3072SF090-1/2	54621	PLB3072DF090-1/2	54673
80	3.008	2.978	5/16	7/16	7/8	1/4	1/2	13/16	3.29	#10-32	PLB3080SF090-5/16	54622	PLB3080DF090-5/16	54674
			3/8								PLB3080SF090-3/8	54623	PLB3080DF090-3/8	54675
			1/2								PLB3080SF090-1/2	54624	PLB3080DF090-1/2	54676
84	3.158	3.128	5/16	7/16	7/8	1/4	1/2	13/16	3.38	#10-32	PLB3084SF090-5/16	54625	—	—
			3/8								PLB3084SF090-3/8	54626	—	—
			1/2								PLB3084SF090-1/2	54627	—	—
96	3.609	3.579	5/16	7/16	7/8	1/4	1/2	13/16	3.83	#10-32	PLB3096SF090-5/16	54628	—	—
			3/8								PLB3096SF090-3/8	54629	—	—
			1/2								PLB3096SF090-1/2	54630	—	—
120	4.511	4.481	3/8	7/16	7/8	1/4	1/2	7/8	—	#10-32	PLB3120NF090-3/8*	54631	—	—
			1/2								PLB3120NF090-1/2*	54632	—	—

†7/8" for Double Flange  
\*No Flange